

Windows

Panasonic

Network Function Quick Guide

**(PT-LB80NTU/PT-LB80NTE/PT-LB80NTEA)
(PT-LB75NTU/PT-LB75NTE/PT-LB75NTEA)**

Installing the software and viewing the operating instructions

- Before installation, see "System requirements" at the upper right of this guide.
- Shut down all software currently active on Windows. Otherwise, installation may not be possible.
- Administrator authority is required for installation.
- If Wireless Manager mobile edition (henceforth abbreviated to "Wireless Manager ME") 1.0, 2.0, 3.0, 4.0 or 4.5 has been installed, uninstall it. (See the bottom left of this guide.)

1 Set the supplied CD-ROM in the CD or DVD drive.

- The installer starts up automatically and the screen at right appears.
- If the installer does not start up automatically, double-click [EasyInstall] → [Easy_Inst.exe] in the CD-ROM.



2 Click a software or function name button.

[Wireless Manager ME 5.0]:

This software is used to send screen images from a computer to the projector via a wireless LAN. When installing this software, follow the instructions on the screen.

[Installation Free Set Up]:

Although some are impossible, you can use the basic functions of Wireless Manager ME 5.0 without installing it in the computer.

When using Wireless Manager ME 5.0 without copying the program

Click [Direct CD-ROM Startup] to launch Wireless Manager ME 5.0.

When copying Wireless Manager ME 5.0

- (1) Click [Other Media Source Startup, Make Copy Here].
- (2) Select the destination to save, and click [OK].
- (3) Double-click the Wireless Manager ME 5.0 icon (WMstart.exe) in the destination to launch Wireless Manager ME 5.0.

[Operating Instructions]:

The "Network Function Edition for Windows" and "Secondary Display Transmission Function Advanced Operation" documents are stored in the supplied CD-ROM in PDF file form. To see them, Adobe Reader (URL: <http://www.adobe.com/>) is required. Click on a desired document name on the displayed list.

System requirements

OS	Microsoft Windows 2000 Professional SP4 Microsoft Windows XP Home Edition/XP Professional/XP Tablet Edition Microsoft Windows Vista® Ultimate 32 bit/Vista® Business 32 bit Microsoft Windows Vista® Home Premium 32 bit/Vista® Home Basic 32 bit <small>When using Windows Vista®, movies cannot be played using the secondary display transmission function.</small>
CPU	Intel® Pentium® III 800 MHz or faster or compatible processor (1 GHz or faster is recommended when using live mode)
RAM	256 MB
Empty hard disk capacity	60 MB
Web browser	Internet Explorer 6.0 or newer Netscape Communicator 7.0 or newer
Hardware conditions	CD or DVD drive Wireless LAN function
Wireless LAN	An IEEE802.11 b/g built-in wireless LAN system or an IEEE802.11 b/g wireless LAN adaptor must be installed and running properly. However, some IEEE802.11 b/g wireless LAN may not allow connection to IEEE802.11 g projectors. When your computer has no built-in wireless LAN function, a wireless LAN card driver must be installed and recognized properly. If Network Bridge in Windows XP or firewall in Windows XP SP1 or later is enabled, this will prevent a wireless connection. For details, see "Network Function Edition for Windows" in the supplied CD-ROM.
Other	When security (firewall) software and utilities for network cards are installed, these may prevent connection of the projector.

- Note that operation is not guaranteed when used with system environments other than the above or on homemade computers.
- Operation is not guaranteed for all computers that meet the above conditions.
- Operation is not guaranteed for all wireless LAN cards and built-in wireless LAN adaptors.
- It is forbidden to take the projector outside the country or region where you purchased it, so use it only in the said country or region. Also, note that depending on countries or regions there are restrictions on the channels and frequencies at which you can use the wireless LAN.
- You must agree to the "Software Licensing Agreement" to use the supplied software. Please read it carefully when it is displayed during installation.

URL : <http://panasonic.co.jp/pavc/global/projector/>

- Microsoft and its logo as well as Windows and Windows Vista® are either registered trademarks or trademarks of Microsoft Corporation in the United States and/or other countries.
- Intel and Pentium are registered trademarks or trademarks of Intel Corporation or its affiliates in the United States and other countries.
- Adobe Reader is a trademark of Adobe Systems Incorporated.

ENGLISH 한국어

TQDJ19105(En) S0208-1048B

Using network functions

※The projectors illustrated as examples are PT-LB80NTU.

For details of usage, see "Network Function Edition for Windows" in the supplied CD-ROM.

Easy wireless set up

1 Launch Wireless Manager ME 5.0.

When the user name setting window appears

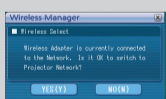


Set the icon and user name, and click [OK].

- If the icon and user name have already been set, the setting window does not appear. Go to step 2.

2 Select the projector that you want to connect to, and click [Connect].

When the confirmation dialog window appears



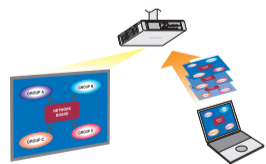
(1) Click [YES].

When the network adaptor selection window appears



- (1) Select the adaptor from the list and click [OK].
- (2) If the confirmation dialog window appears, click [YES].

<Live mode>



Used for normal presentations

3 Click [] on the launcher.

Uninstalling Wireless Manager ME 1.0, 2.0, 3.0, 4.0 or 4.5:

From the desktop, select [Start] → [All Programs] → [Panasonic Wireless Display] → [Uninstall Wireless Manager mobile edition ※.※], and follow the instructions on the screen. (※.※ is 1.0, 2.0, 3.0, 4.0 or 4.5.)

Other examples of usage

<Multi live mode>
 <4-screen multi style> <4-screen index style> <16-screen index style>
 The small-screen layout is the example of PT-LB80NTU.

<Multiple source live mode> **<Multiple source multi live mode>**

<Selective area transmission> **<Secondary display transmission>**
 Screen before operation Screen after operation
 Moving the cursor outside the computer screen with the mouse

<Infrastructure mode (Connecting through the access point)>
 LAN Access point (AP)

<Using WebBrowser>
 See "Network Function Edition for Windows" in the supplied CD-ROM.