

McIntosh®
THE GREAT AMERICAN POWERHOUSE



CR12 Multizone A/V Control Center
MC7108 8-Channel Power Amplifier

McINTOSH MULTIZONE A/V

McINTOSH MULTIZONE A/V

For more than a decade McIntosh has offered multizone systems distinguished not only by musical excellence but also by operating ease and adaptability. A McIntosh multizone A/V system integrates seamlessly with non-McIntosh products and can be scaled for any size installation. If you love music and you want McIntosh performance, a multizone system gives you more of both. But it's also a smart investment, as it uses just one set of audio and video sources to supply any number of rooms or areas in your home. The CR12 Multizone A/V Control Center and the MC7108 8-Channel Power Amplifier go together like hand in glove, offering abundant possibilities for a house-wide entertainment system with true McIntosh performance.



CR12

Multizone A/V Control Center



MC7108

8-Channel Power Amplifier



Featured Technologies

FOUR INDEPENDENT ZONES (CR12). The CR12 is four audio/video preamps in one chassis, each with its own input selector, volume control, and tone controls. For example, you can listen to FM stereo in one zone, CD in a second, watch satellite in a third, and watch a DVD movie in a fourth – *all at the same time*. In addition, a local “private” A/V source can be connected for each zone for use only by that zone. As many as six CR12s can be linked (“cascaded”) for a total of 24 independent A/V zones.

CONTROL DATA OUTPUTS (CR12). To facilitate system integration, the CR12 outputs control data for source components. This allows remote operation of non-McIntosh components either by direct connection to compatible data inputs or via a McIntosh Remote Translator.

REMOTE POWER CONTROL (CR12 + MC7108). The MC7108 receives power on/off data via its single cable link to the CR12. In addition, power control jacks provide the same capability when the units are not linked. A special multipin jack on the CR12 connects to the PC3 AC Power Controller, which coordinates power on/off of zone amps, audio sources, and video components.

EXCLUSIVE MCINTOSH TONE CONTROLS (CR12). Judicious use of well-designed bass and treble controls can compensate for acoustical irregularities. Each zone of the CR12 has its own bass and treble control that offers ± 12 dB adjustments with fine resolution, yet in the “flat” position is *completely* removed from the signal path.

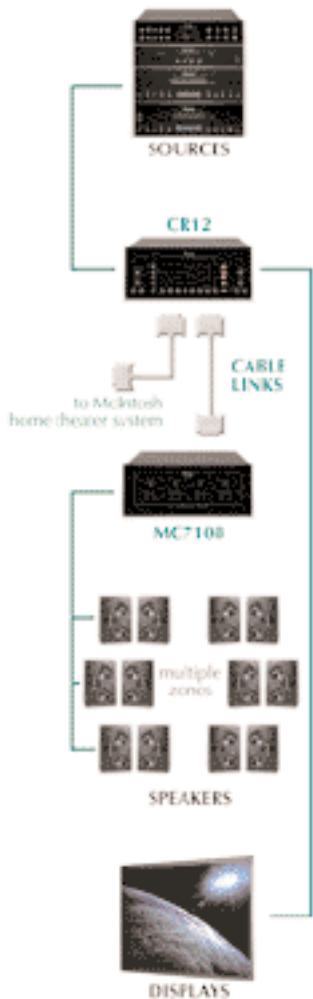
MATCHED AND BUFFERED VIDEO SWITCHING (CR12). High-resolution video sources such as DVDs demand high-quality video switching. Each CR12 video input is terminated with 75 ohms to maintain a proper impedance match. Video buffer amplifiers feed the CR12’s monitor video output, ensuring no loss in picture quality. In addition, the input buffers feed a line-matched signal to the individual video outputs, preventing signal degradation if those sources are in turn fed to another CR12 or a master preamp.

BALANCED CONNECTIONS (CR12). Balanced connections guard against induced noise and allow long cable runs without compromising sound quality. The CR12’s four balanced outputs can be used to feed larger power amps (such as the MC162) for installations that require high sound levels.

CONFIGURABLE POWER OUTPUT (MC7108). Channels 1/2, 3/4, 5/6, and 7/8 can be operated either in the normal mode (40W x 8) or with each channel pair independently bridged (100W x 4). Configurations of 7, 6, 5, and 4 channels are also possible. For example, a 5-channel configuration for home theater would comprise three bridged channel pairs plus two normal channels, resulting in 100Wx3 for left/center/right speakers and 40Wx2 for the surround speakers.

EXCLUSIVE MCINTOSH POWER ASSURANCE SYSTEM (MC7108). Power Assurance is a collection of technologies that enhance performance and reliability and protect the amp and the loudspeakers.

Power Guard® clipping protection. Power Guard ensures that the amplifier will always deliver full power without causing clipping distortion. If an amplifier channel is over-driven, Power Guard automatically reduces the input volume just enough to keep distortion below 2% and prevent any clipping distortion. Thanks to an optical resistor, Power Guard



All it takes is one cable to join the CR12 and the MC7108... and one more to link a multi-zone system to a home theater.

About the CR12/MC7108 Companion Products

The McIntosh products shown at right are logical companions for the CR12/MC7108. Separate literature is available. Check with your McIntosh dealer for any late additions. McIntosh speaker systems are also covered in detail in separate literature.

WK2, WK3, WK4 Keypad Controllers and R649 IR Sensor. The wall-mount, illuminated keypads enable pushbutton operation and include IR sensors that relay commands from handheld remotes. The CR12 can accommodate as many as four keypads or IR sensors in each of its four zones. (See the separate McIntosh System Accessories literature for more on keypads and IR sensors.)

RCT3 Remote Translator. The Translator allows non-McIntosh components to be operated with a McIntosh IR remote or keypad controller. It connects to the data outputs on the CR12.

HC1 Home Controller. The HC1 connects to the CR12's HOME data output and allows remote operation of other home devices such as lights and movie screens.

PC3 AC Power Controller. The PC3 provides a total of 14 AC outlets (11 switched, 3 unswitched) for automatic AC control of zone amps, audio sources, and video components. It connects to a multipin jack on the CR12.

PC4 AC Power Control. The PC4 provides five AC outlets (four switched) for turning non-McIntosh components on and off automatically when it is connected to the power control output of a Control Center or Integrated Amplifier.

MR7084 AM/FM Tuner with RAA1 Remote AM Antenna. Likely to be the most-used source in a multizone system, the MR7084 tuner is a thoroughly engineered broadcast monitor that reveals the upper limits of AM and FM performance. The optional RAA1 antenna can be positioned away from sources of interference (e.g., TV sets, fluorescent lights) for greatly improved AM quality.

MX132 A/V Control Center + Processor. A single cable connection between the MX132 and the CR12 integrates a McIntosh home theater and multizone system. This lets the two systems share one group of source components. (The MX132 has a built-in AM/FM tuner and is supplied with the RAA1 antenna, obviating the need for the MR7084.)



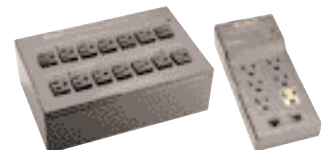
WK2, WK3, WK4 KEYPAD CONTROLLERS
AND R649 IR SENSOR



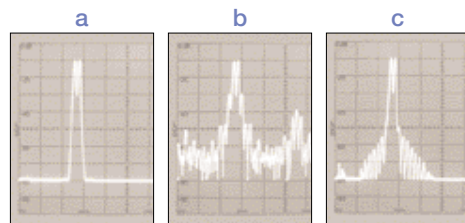
RCT3 REMOTE TRANSLATOR



HC1 HOME CONTROLLER



PC3, PC4 AC POWER CONTROLLERS



The patented McIntosh Power Guard in the MC7108 provides real-time clipping protection without affecting power output or sound quality.

a) test signal
b) overdriven amp without Power Guard produces SEVERE clipping
c) overdriven amp with Power Guard produces NO clipping

Featured Technologies (cont'd.)

acts literally at the speed of light, producing absolutely no audible side effects. An amplifier with Power Guard will actually deliver clipping-free output well above its rated power.

Sentry Monitor® current protection. Sentry Monitor continually senses the voltage and current of the output stage and confines it to a safe limit. Sentry Monitor does not limit power output.

Thermal Cutout. If the cooling air is blocked and the power transistors become too hot, thermal cutouts protect against overheating until the amp cools.

Turn-On Delay. This circuit delays operation for about two seconds after turn-on in order to avoid any pops or thumps generated as other equipment turns on.

Soft Start inrush protection. Thermistors in the power transformer act as a cushion against inrush current, eliminating component stress during turn-on. Soft Start is one of many design details that contribute to the remarkable longevity of McIntosh equipment.



MR7084 AM/FM TUNER



MX132 A/V CONTROL CENTER
+ PROCESSOR



Most consumer electronics products are necessarily viewed as short-term investments because either they don't last or they quickly become obsolete in some way. *Coincidentally*, manufacturers supply a steady stream of "new-and-improved" products that you can buy. *Again*.

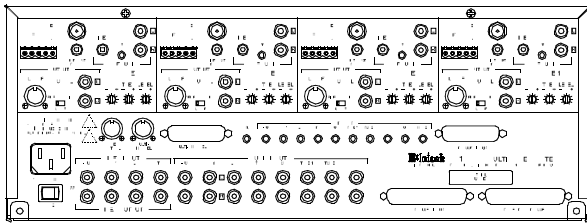
Behind every McIntosh is a fifty-year heritage of excellence, proudly carried forward by every employee. No production

lines, no "price-point" engineering, no planned obsolescence. McIntosh equipment is made to sound better and last longer.

When McIntosh products are presented to customers, the criteria they have been conditioned to overlook – reliability, longevity, craftsmanship, ease-of-use, adaptability, pride of ownership – suddenly leap to the top of their list.

The choice becomes clear: ***There is nothing like a McIntosh.***

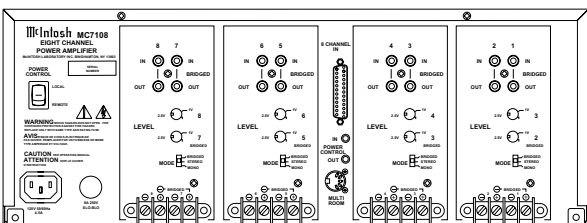
CR12 Multizone A/V Control Center



FEATURES

- Multizone A/V Control Center
- 4 independent zones comprising 4 McIntosh A/V preamps
- Single-cable connection to McIntosh MC7108
- 8-Channel Power Amplifier
- Single-cable connection to a “master” preamp (e.g., to link CR12 multizone system to MX132-based home theater system)
- Single-cable connections for cascading as many as six CR12s for a total of 24 independent zones
- 8 common (shared) sources (4 audio, 4 A/V)
- 1 additional local “private” A/V source for each zone
- LED status indicators for all 4 zones
- Programmable “wake-up” conditions for each zone
- Output level trim for each zone (can also be used to set maximum permissible volume)
- Exclusive McIntosh tone controls for each zone
- Balanced outputs for each zone (fixed or variable)
- Unbalanced outputs for each zone (variable)
- Matched and buffered video switching
- Control data output for source components
- Remote operation of lights, screens, and drapes with McIntosh HC1 Home Controller
- Remote power control
- Selectable control priority for limiting operation from any zone
- Accommodates as many as 4 keypads or IR sensors per zone
- Front panel reset does not affect memory
- Gold-plated input and output jacks
- Modular construction with steel chassis
- Glass front panel with illuminated nomenclature

MC7108 8-Channel Power Amplifier



FEATURES

- 8-Channel Power Amplifier for multizone and home theater systems
- Single-cable connection to CR12 Multizone A/V Control Center
- 8 x 40 watts (4 ohms) or 8 x 25 watts (8 ohms)
- Any pair can be bridged for 1 x 100 watts (4 ohms)
- Configurable to 7, 6, 5, or 4 channels
- Theater power configuration: (3 x 100W) + (2 x 40W)
- Wide power bandwidth
- Ultra-low distortion
- Exclusive McIntosh Power Assurance System:
 - Power Guard® clipping protection
 - Sentry Monitor® current protection
 - Thermal Cutout
 - Turn-On Delay
 - Soft Start inrush protection
- Low-noise toroid power transformer
- Remote power control
- Gold-plated high-current output terminals
- Fanless convection cooling
- Modular construction with steel chassis
- Glass front panel with illuminated nomenclature

SPECIFICATIONS

20Hz to 20kHz, +0 / -0.5dB	90dB below rated output
2.5V	22k ohms
8V from 20Hz to 20kHz	Input to variable outputs: 14dB Input to fixed (balanced) outputs: 0dB
600 ohms balanced and unbalanced	Bass and treble \pm 12dB
0.019% max. 20Hz to 20kHz at rated output	120V 50/60Hz, 25W
250mV for rated output	inch: 7.062 x 17.5 x 20 cm: 17.9 x 44.5 x 50.8
8V	15 lbs. (6.8kg) net 27 lbs. (12.2kg) shipping

MC7108 8-Channel Power Amplifier

SPECIFICATIONS

Min. sine wave continuous avg. output per channel with all channels operating: Normal: 40 watts (4 Ω) or 25 watts (8 Ω) Bridged: 100 watts (4 Ω) (Can also be configured for 7, 6, 5, or 4 channels)	1V (2.5V at gain control center detent)
8 or 4 ohms	92dB (112dB below rated output)
20Hz to 20kHz	200 (8 ohms); 100 (4 ohms)
> 10 amperes	20k ohms
0.005% max. at any level from 250mW to rated output from 20Hz to 20kHz	Clipping is prevented and THD does not exceed 2% with up to 14dB overdrive at 1kHz
0.005% maximum if instantaneous peak output does not exceed twice the output power rating	120V 50/60Hz, 4.5A
1.8dB	inch: 7.062 x 17.5 x 20 cm: 17.9 x 44.5 x 50.8
20Hz to 20kHz, +0 / -0.25dB 10Hz to 100kHz, +0 / -3.0dB	40 lbs. (18.1kg) net 58 lbs. (26.4kg) shipping